

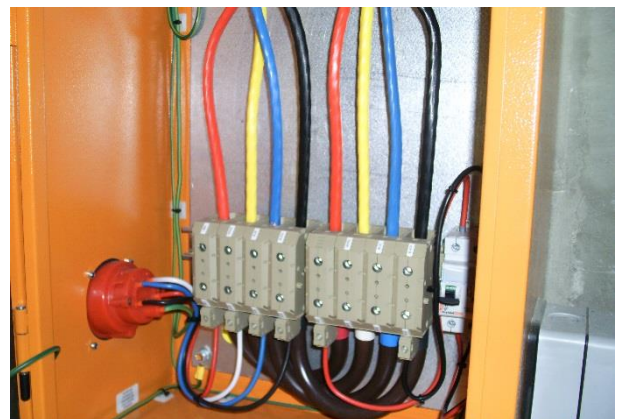
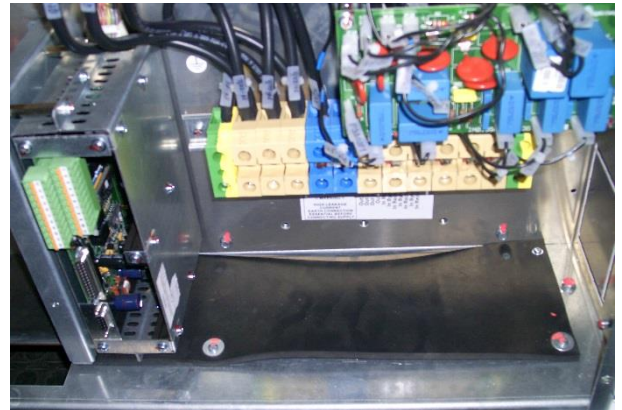
Gautrain Rapid Rail Link

Scope of Work

This order includes for the design, supply of drawings for approval, manufacture, supply, inspection, testing, packing, forwarding and delivery to site, installation / erection and commissioning of the Busbar System.



Location	South Africa
Client	Bombela Civils Joint Venture
Project Type	Design, Supply, Installation & Commissioning of Electrical Systems
Value	R 380 Million
Duration	4 Years
Completion Date	April 2011



Project Overall Description

Electrical, control and instrumentation specialist engineers and contractors, Wade Walker, in joint venture with power generation and rail transport specialist, ACTOM (formerly at inception ALSTOM South Africa), is underway with one of the substantial electrical works contracts for the R25,4-billion Gautrain rapid rail link. The size and uniqueness of the Gautrain rapid rail link is unparalleled in Africa and the successful commissioning of the first phase of the project in time for the 2010 FIFA World Cup against a much-accelerated programme was a significant achievement for the Wade Walker/ACTOM Consortium.